

# Vygeboom Estate



OPTIONAL PLAN PACK





LOUNGE PERSPECTIVE



KITCHEN TO DINING ROOM PERSPECTIVE



KITCHEN TO LOUNGE PERSPECTIVE



# INTERIORS

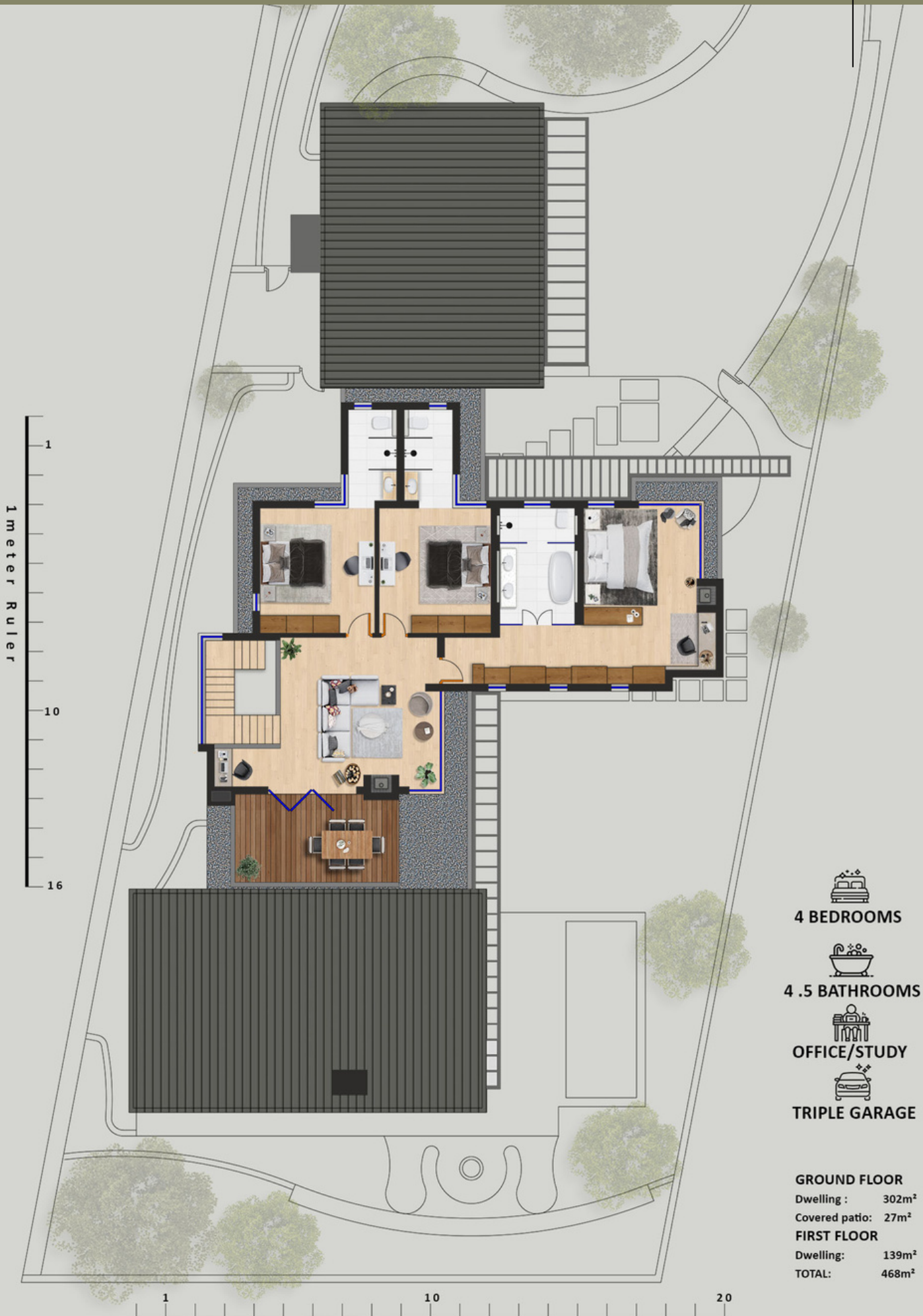


BEDROOM PERSPECTIVE

KITCHEN PERSPECTIVE



BRAAI ROOM PERSPECTIVE



-  4 BEDROOMS
-  4.5 BATHROOMS
-  OFFICE/STUDY
-  TRIPLE GARAGE

**GROUND FLOOR**

Dwelling : 302m<sup>2</sup>  
 Covered patio: 27m<sup>2</sup>




**FIRST FLOOR**

Dwelling: 139m<sup>2</sup>  
 TOTAL: 468m<sup>2</sup>



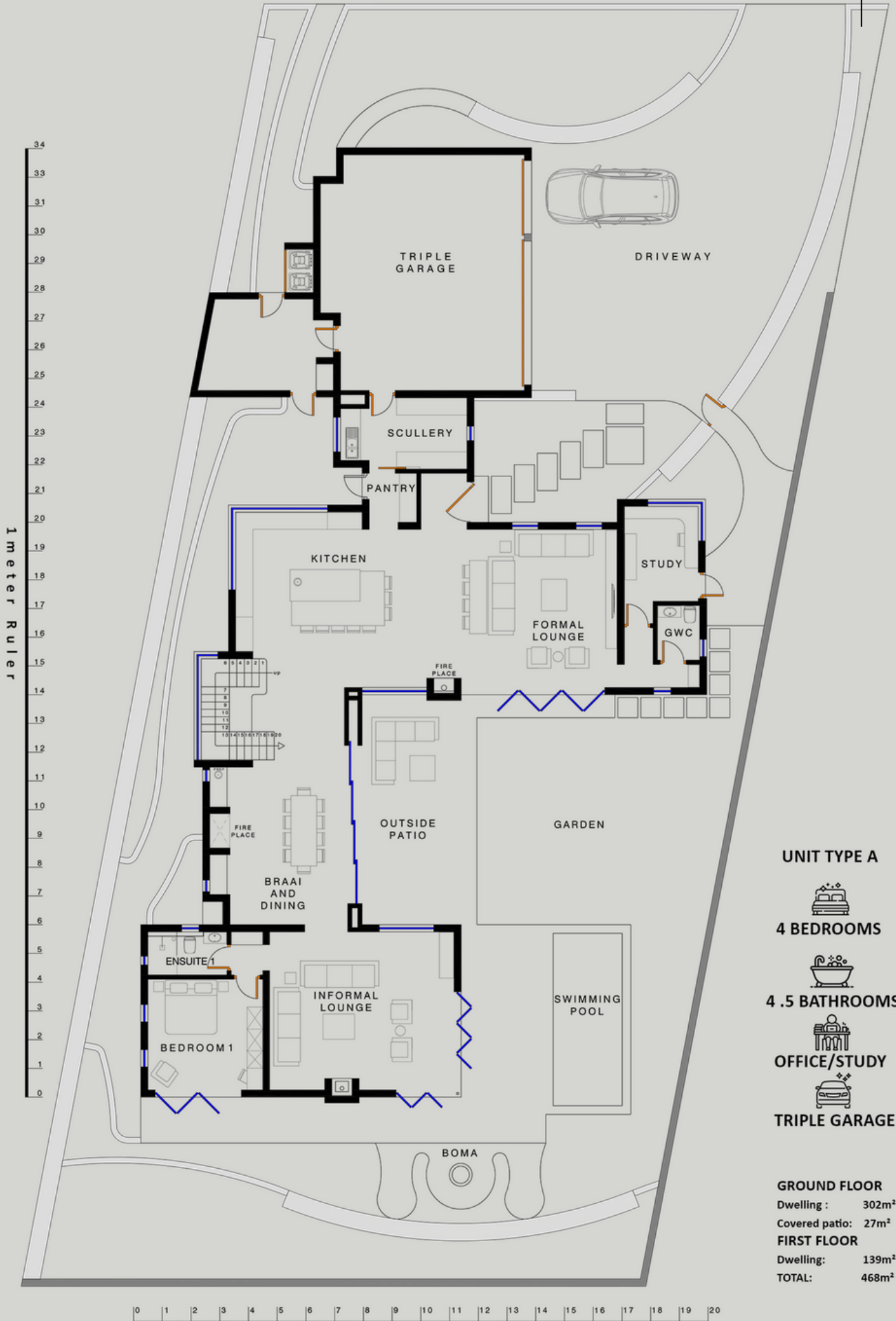
# RENDERED PLANS



-  4 BEDROOMS
-  4.5 BATHROOMS
-  OFFICE/STUDY
-  TRIPLE GARAGE

|                     |                         |
|---------------------|-------------------------|
| <b>GROUND FLOOR</b> |                         |
| Dwelling :          | 302m <sup>2</sup>       |
| Covered patio:      | 27m <sup>2</sup>        |
| <b>FIRST FLOOR</b>  |                         |
| Dwelling:           | 139m <sup>2</sup>       |
| <b>TOTAL:</b>       | <b>468m<sup>2</sup></b> |





**UNIT TYPE A**

  
**4 BEDROOMS**

  
**4.5 BATHROOMS**

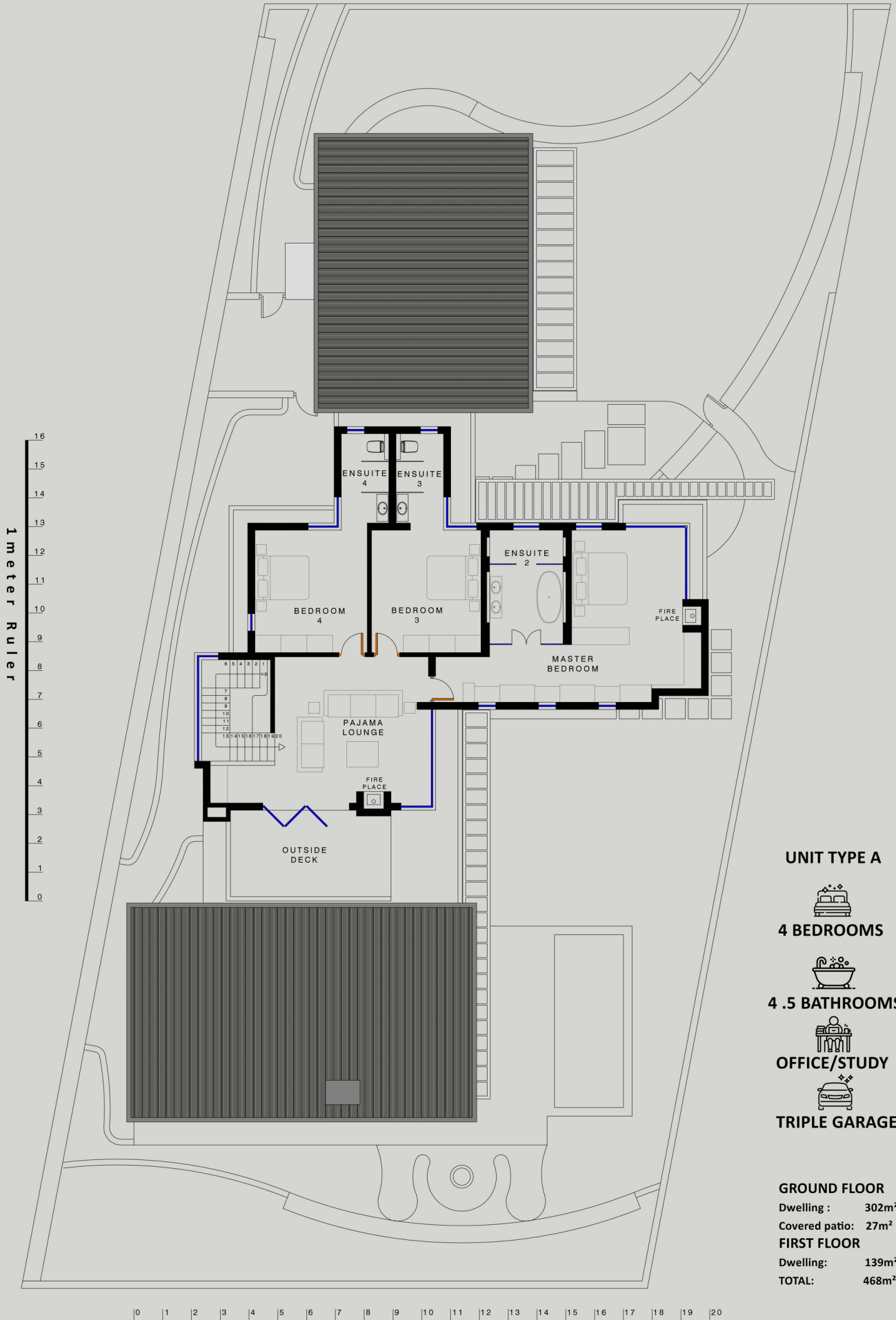
  
**OFFICE/STUDY**

  
**TRIPLE GARAGE**

**GROUND FLOOR**  
 Dwelling : 302m<sup>2</sup>  
 Covered patio: 27m<sup>2</sup>  
**FIRST FLOOR**  
 Dwelling: 139m<sup>2</sup>  
**TOTAL: 468m<sup>2</sup>**



# TYPE A - FIRST FLOOR



## UNIT TYPE A



4 BEDROOMS



4.5 BATHROOMS



OFFICE/STUDY



TRIPLE GARAGE

## GROUND FLOOR

Dwelling : 302m<sup>2</sup>

Covered patio: 27m<sup>2</sup>

## FIRST FLOOR

Dwelling: 139m<sup>2</sup>

TOTAL: 468m<sup>2</sup>

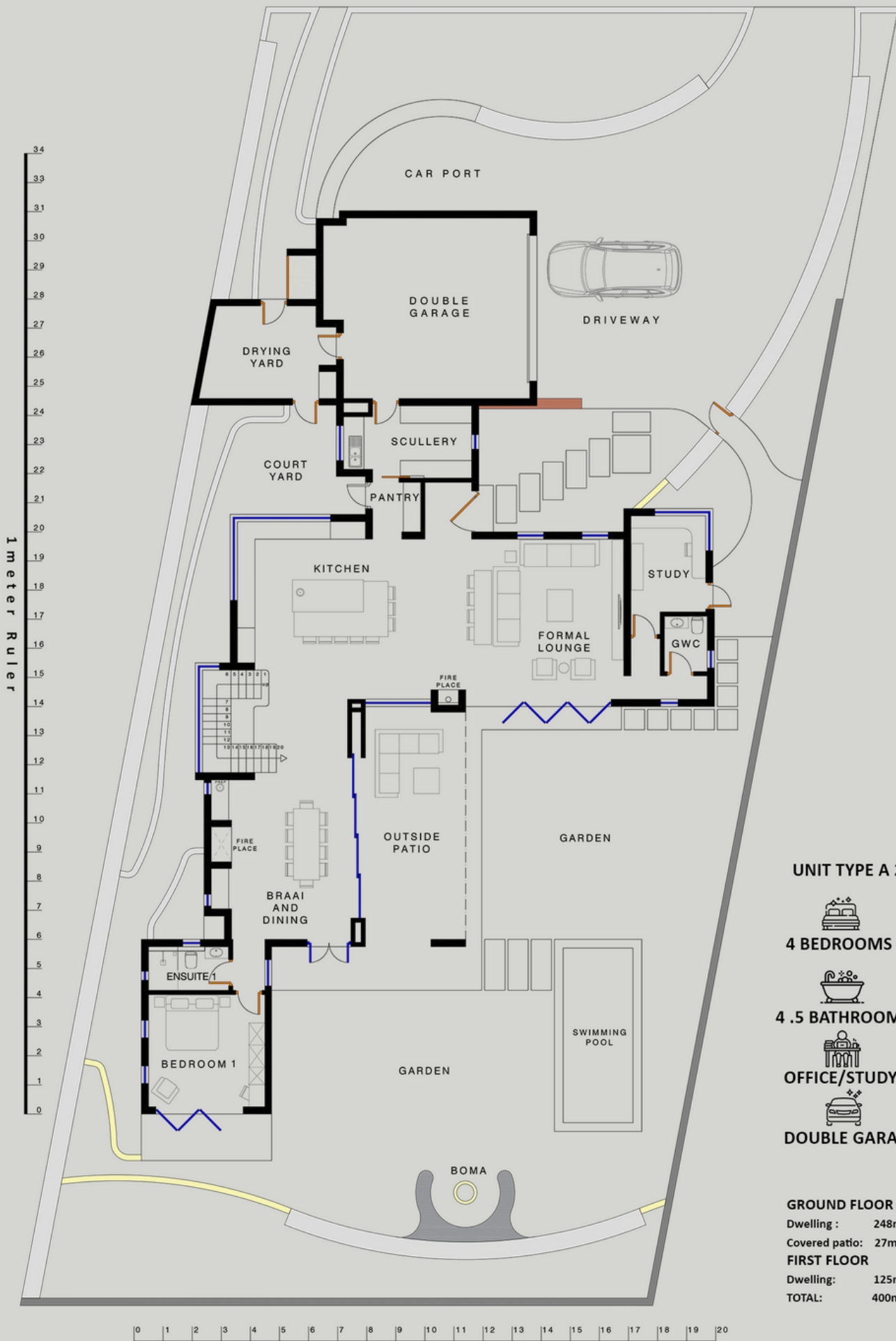
FIRST FLOOR  
ERF SIZE - 970m<sup>2</sup>

1 meter Ruler

Vygeboom Estate



# TYPE A2 - GROUND FLOOR



## UNIT TYPE A 2



4 BEDROOMS



4.5 BATHROOMS



OFFICE/STUDY



DOUBLE GARAGE

## GROUND FLOOR

Dwelling : 248m<sup>2</sup>

Covered patio: 27m<sup>2</sup>

## FIRST FLOOR

Dwelling: 125m<sup>2</sup>

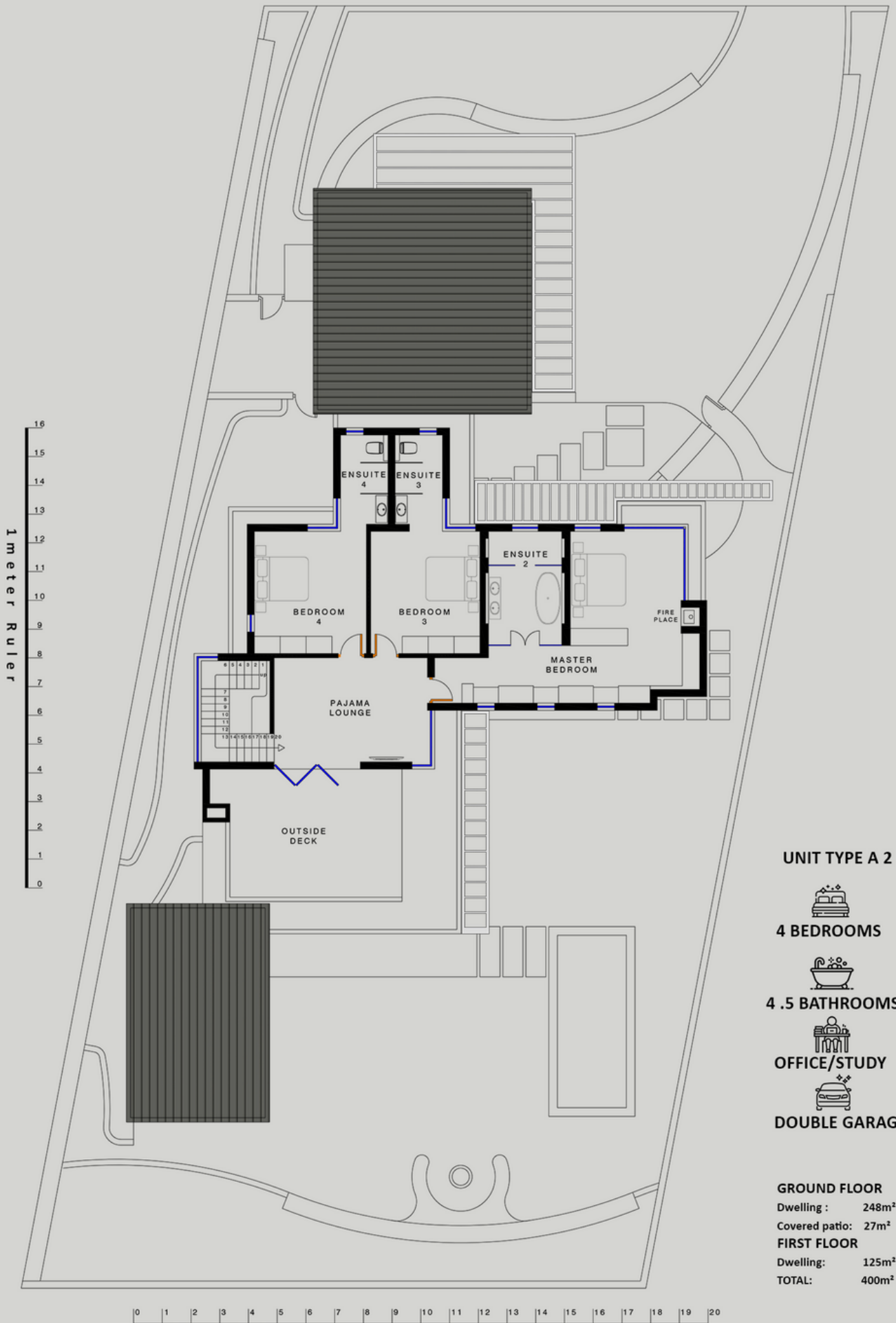
TOTAL: 400m<sup>2</sup>

FIRST FLOOR  
ERF SIZE - 970m<sup>2</sup>

1 meter Ruler



# TYPE A2 - FIRST FLOOR



## UNIT TYPE A 2



4 BEDROOMS



4.5 BATHROOMS



OFFICE/STUDY



DOUBLE GARAGE

## GROUND FLOOR

Dwelling : 248m<sup>2</sup>

Covered patio: 27m<sup>2</sup>

## FIRST FLOOR

Dwelling: 125m<sup>2</sup>

TOTAL: 400m<sup>2</sup>

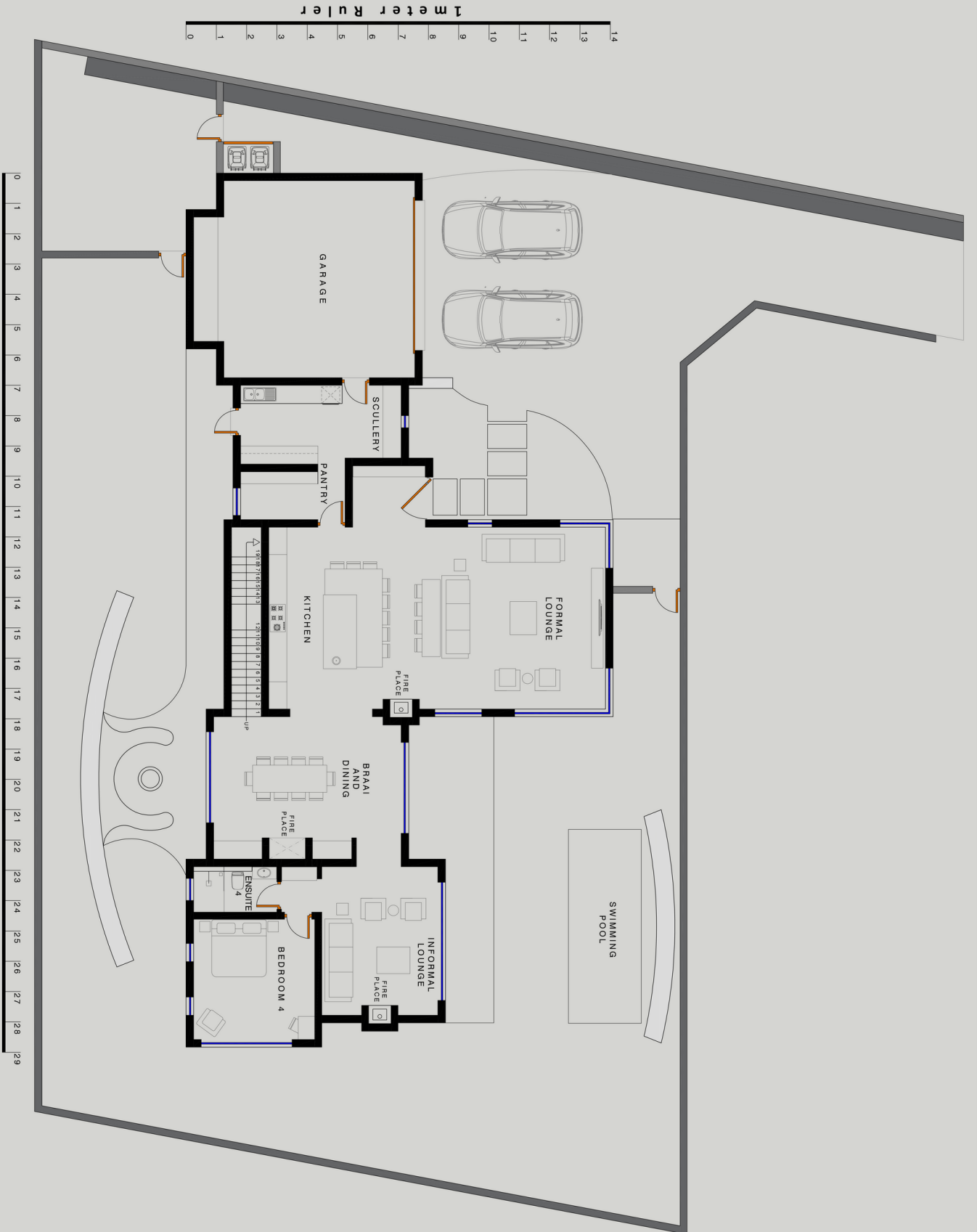
FIRST FLOOR  
ERF SIZE - 970m<sup>2</sup>

1 meter Ruler

Vygeboom Estate



# TYPE B - GROUND FLOOR



GROUND FLOOR  
ERF SIZE - 813m<sup>2</sup>

1 meter Ruler

**GROUND FLOOR**  
Dwelling : 245m<sup>2</sup>  
Covered patio: 15m<sup>2</sup>  
**FIRST FLOOR**  
Dwelling: 123m<sup>2</sup>  
**TOTAL:**  
383m<sup>2</sup>

**DOUBLE GARAGE**



**4 BATHROOMS**



**4 BEDROOMS**



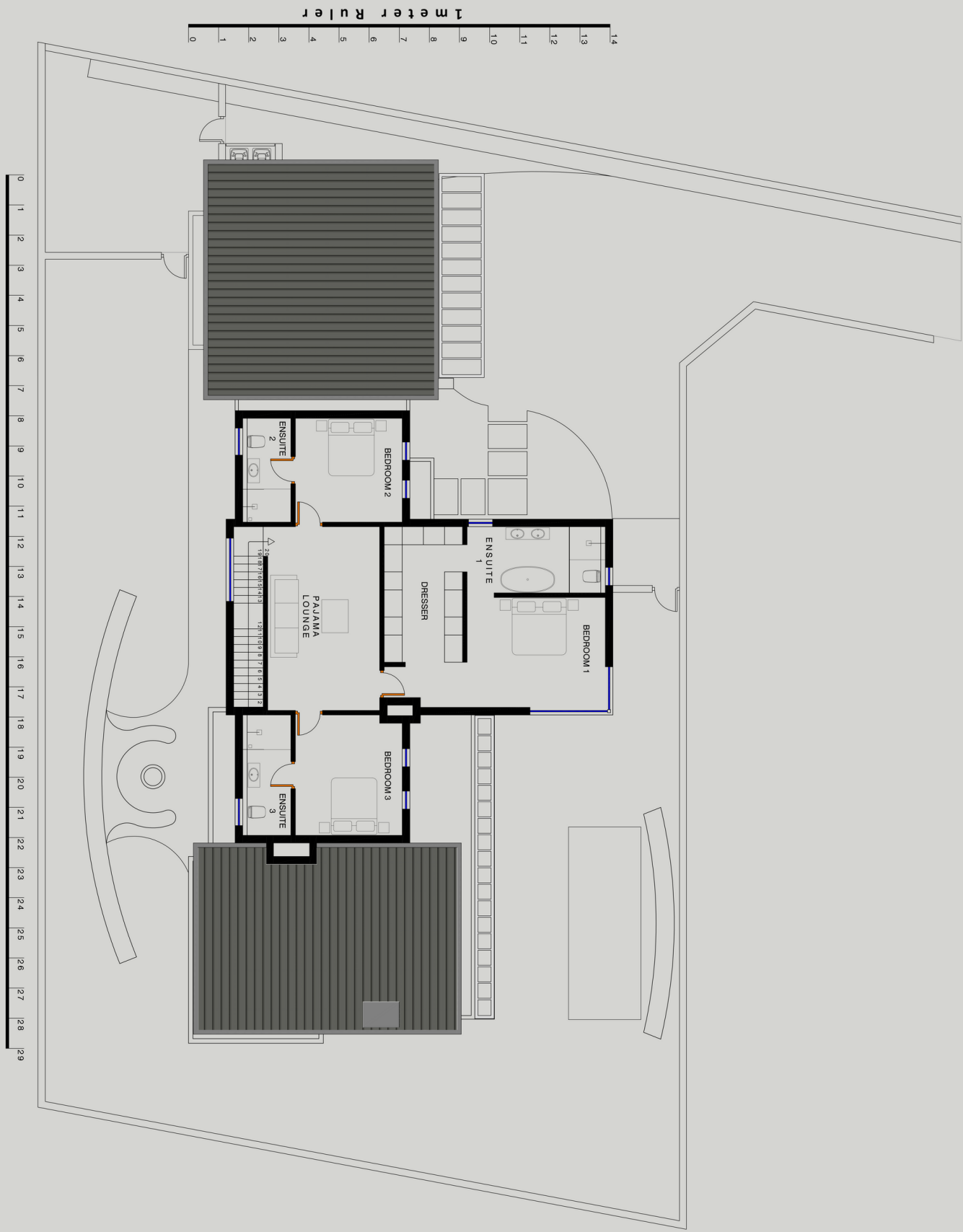
**UNIT TYPE B**

*Vogelboom Estate*





# TYPE B - FIRST FLOOR



FIRST FLOOR  
ERF SIZE - 813m<sup>2</sup>

1 meter Ruler

**GROUND FLOOR**  
Dwelling : 245m<sup>2</sup>  
Covered patio: 15m<sup>2</sup>

**FIRST FLOOR**  
Dwelling: 123m<sup>2</sup>  
**TOTAL:** 383m<sup>2</sup>

**DOUBLE GARAGE**



**4 BATHROOMS**



**4 BEDROOMS**

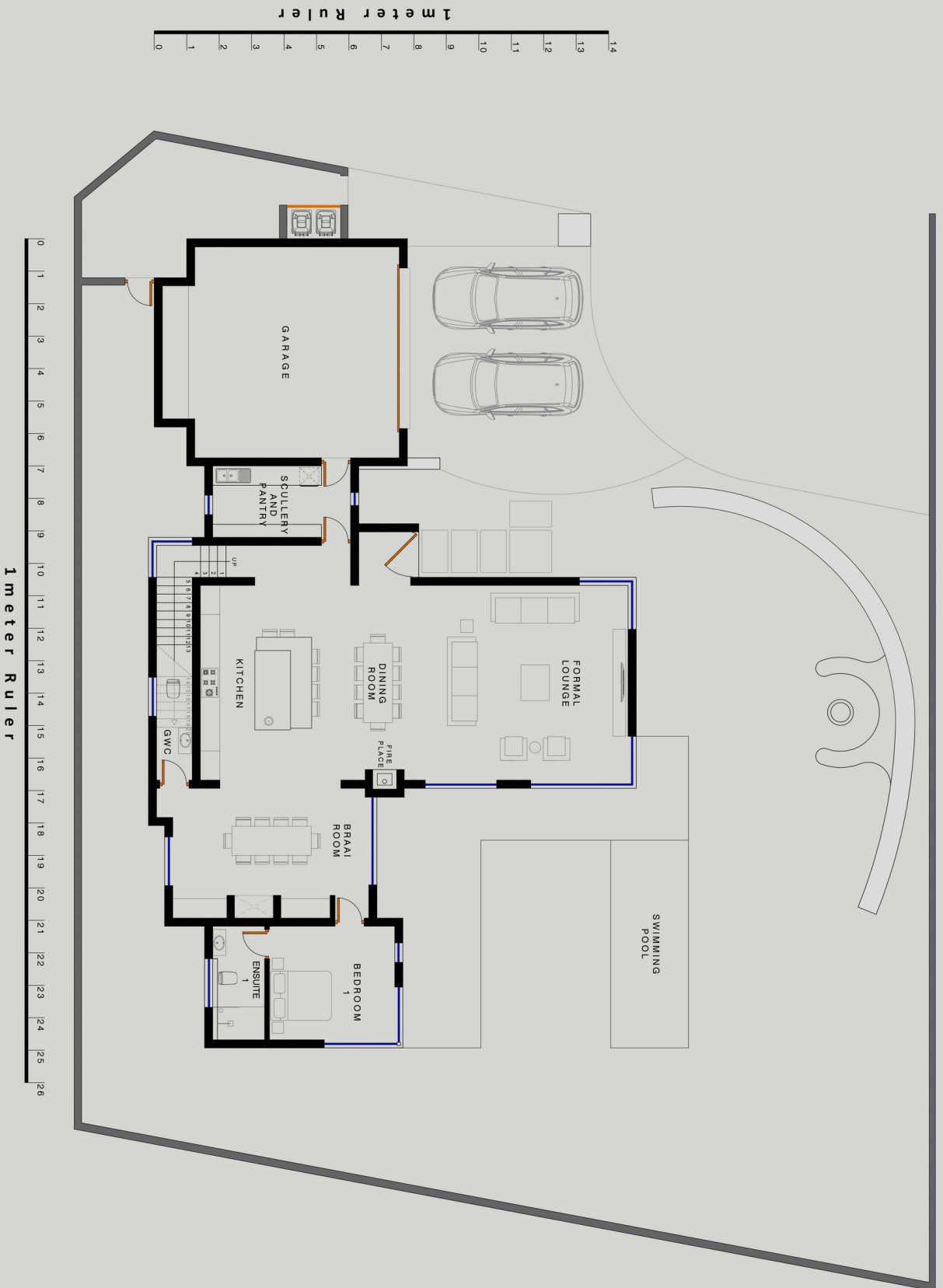


**UNIT TYPE B**

Vogelboom Estate



# TYPE C - GROUND FLOOR



## UNIT TYPE C

### 3 BEDROOMS

### 3.5 BATHROOMS

### DOUBLE GARAGE

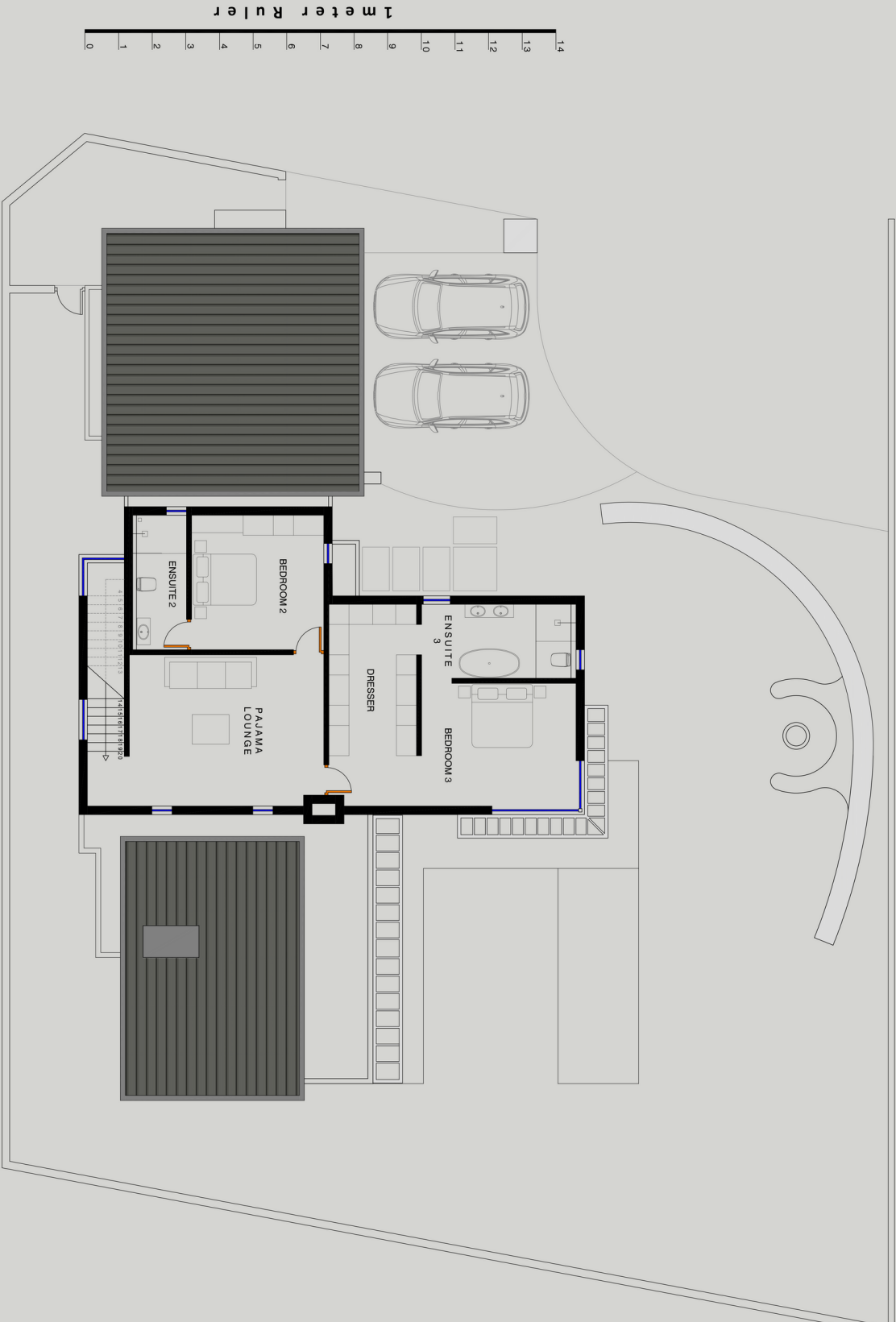
### GROUND FLOOR

Dwelling: 224m<sup>2</sup>  
 Covered patio: 10m<sup>2</sup>  
**FIRST FLOOR**  
 Dwelling: 109m<sup>2</sup>  
**TOTAL:** 383m<sup>2</sup>

GROUND FLOOR  
**ERF SIZE - 748m<sup>2</sup>**



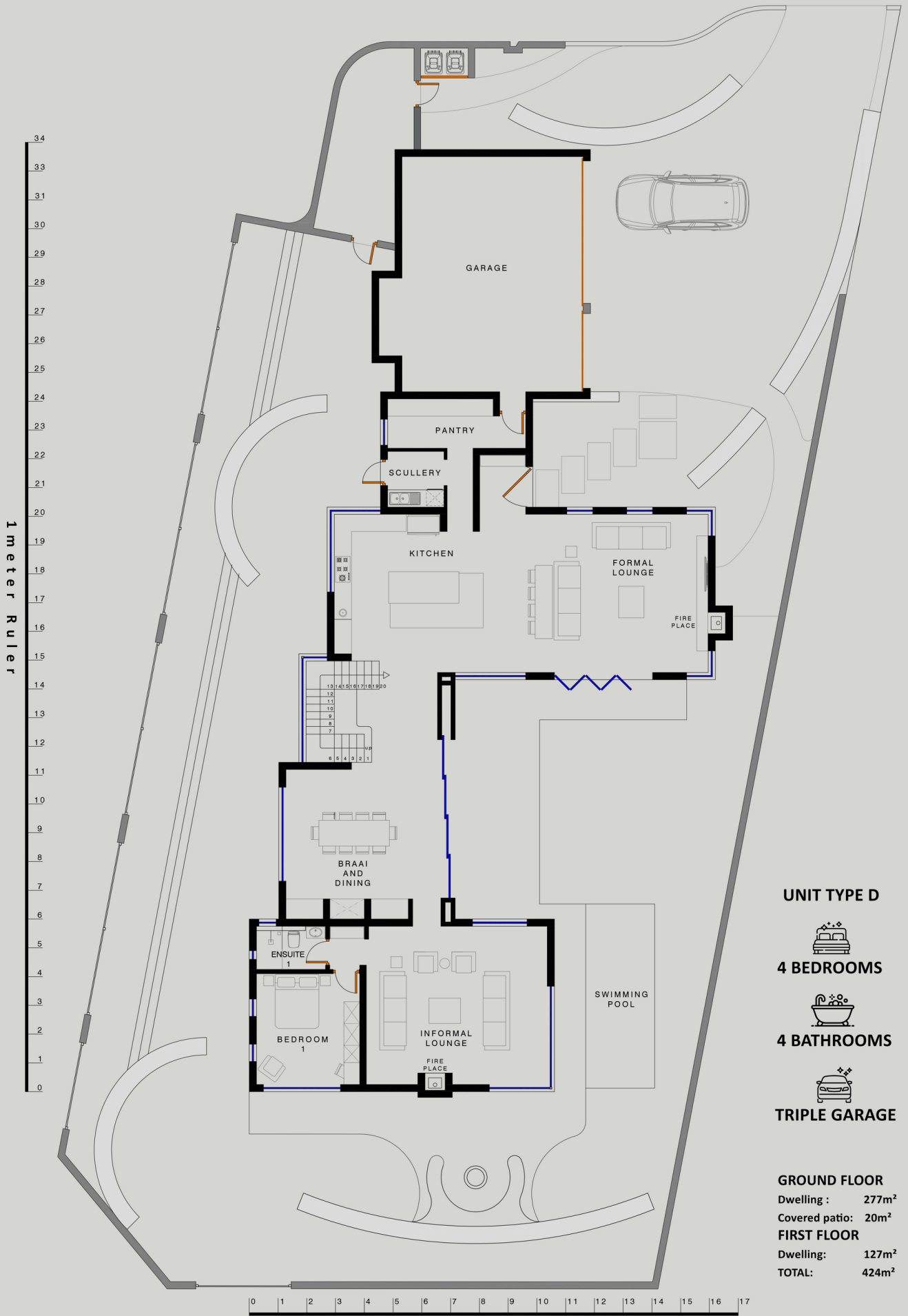
# TYPE C - FIRST FLOOR



- UNIT TYPE C**
- 3 BEDROOMS**
- 3.5 BATHROOMS**
- DOUBLE GARAGE**
- GROUND FLOOR**  
 Dwelling: 224m<sup>2</sup>  
 Covered patio: 10m<sup>2</sup>
- FIRST FLOOR**  
 Dwelling: 109m<sup>2</sup>
- TOTAL:** 343m<sup>2</sup>

FIRST FLOOR  
ERF SIZE - 748m<sup>2</sup>

# TYPE D - GROUND FLOOR



## UNIT TYPE D

  
4 BEDROOMS

  
4 BATHROOMS

  
TRIPLE GARAGE

**GROUND FLOOR**  
Dwelling : 277m<sup>2</sup>  
Covered patio: 20m<sup>2</sup>  
**FIRST FLOOR**  
Dwelling: 127m<sup>2</sup>  
**TOTAL: 424m<sup>2</sup>**

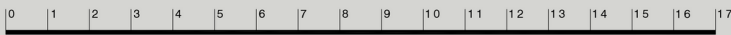
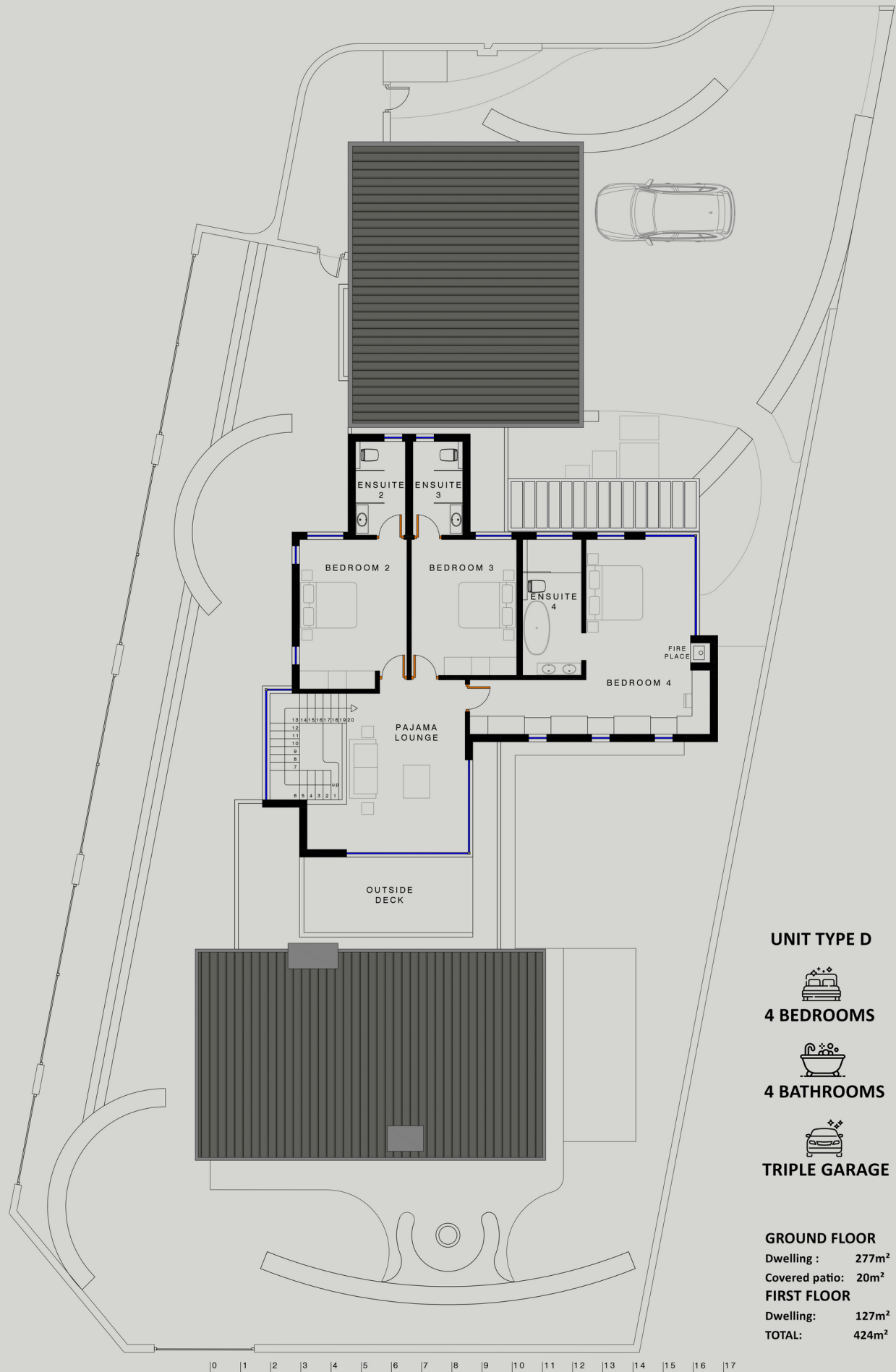
GROUND FLOOR  
ERF SIZE - 970m<sup>2</sup>

1 meter Ruler

*Vygeboom Estate*



# TYPE D - FIRST FLOOR



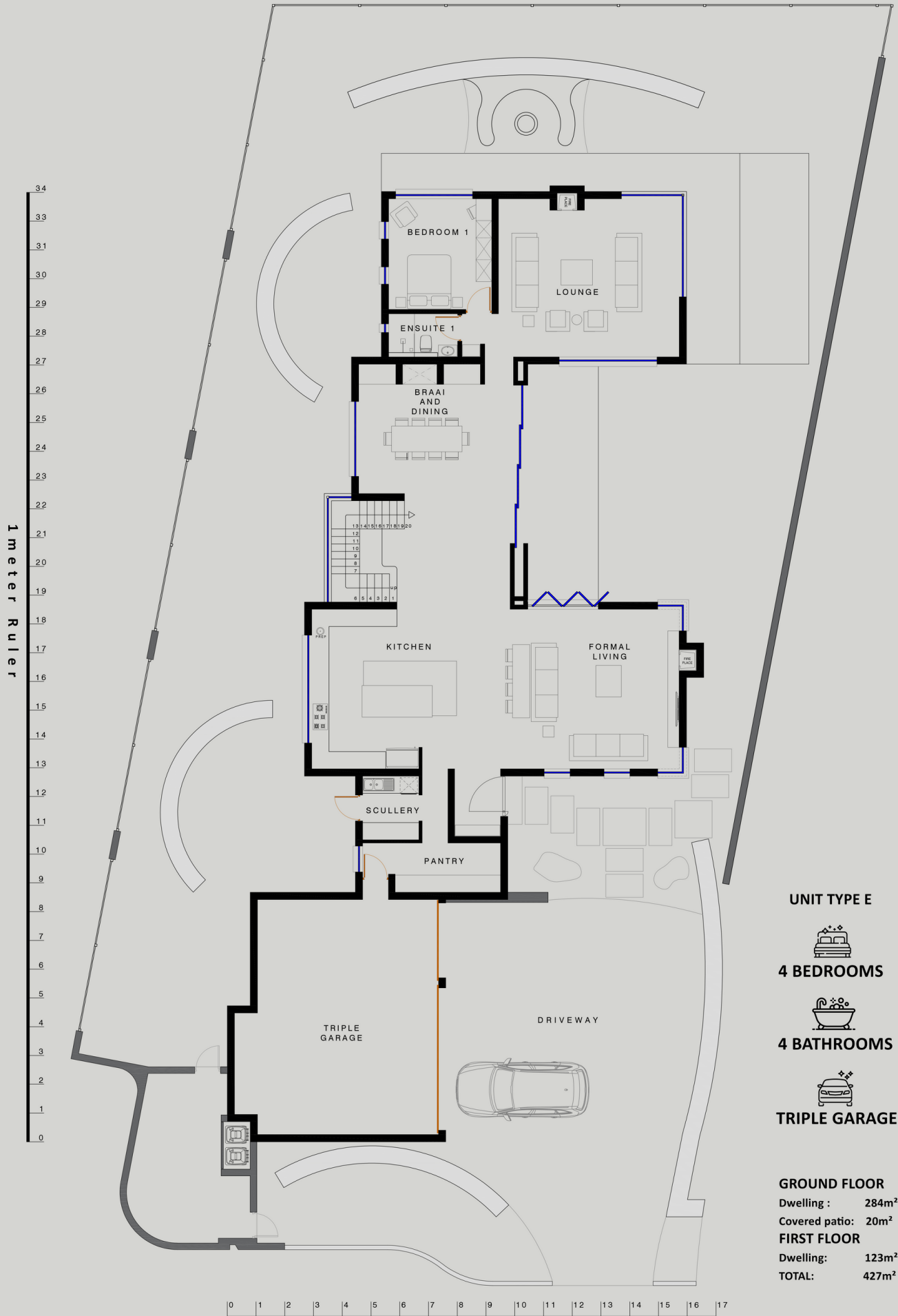
- UNIT TYPE D**
-  4 BEDROOMS
  -  4 BATHROOMS
  -  TRIPLE GARAGE

**GROUND FLOOR**  
 Dwelling : 277m<sup>2</sup>  
 Covered patio: 20m<sup>2</sup>  
**FIRST FLOOR**  
 Dwelling: 127m<sup>2</sup>  
**TOTAL: 424m<sup>2</sup>**

FIRST FLOOR  
**ERF SIZE - 970m<sup>2</sup>**



# TYPE E - GROUND FLOOR



**UNIT TYPE E**

  
**4 BEDROOMS**

  
**4 BATHROOMS**

  
**TRIPLE GARAGE**

**GROUND FLOOR**

Dwelling : 284m<sup>2</sup>

Covered patio: 20m<sup>2</sup>

**FIRST FLOOR**

Dwelling: 123m<sup>2</sup>

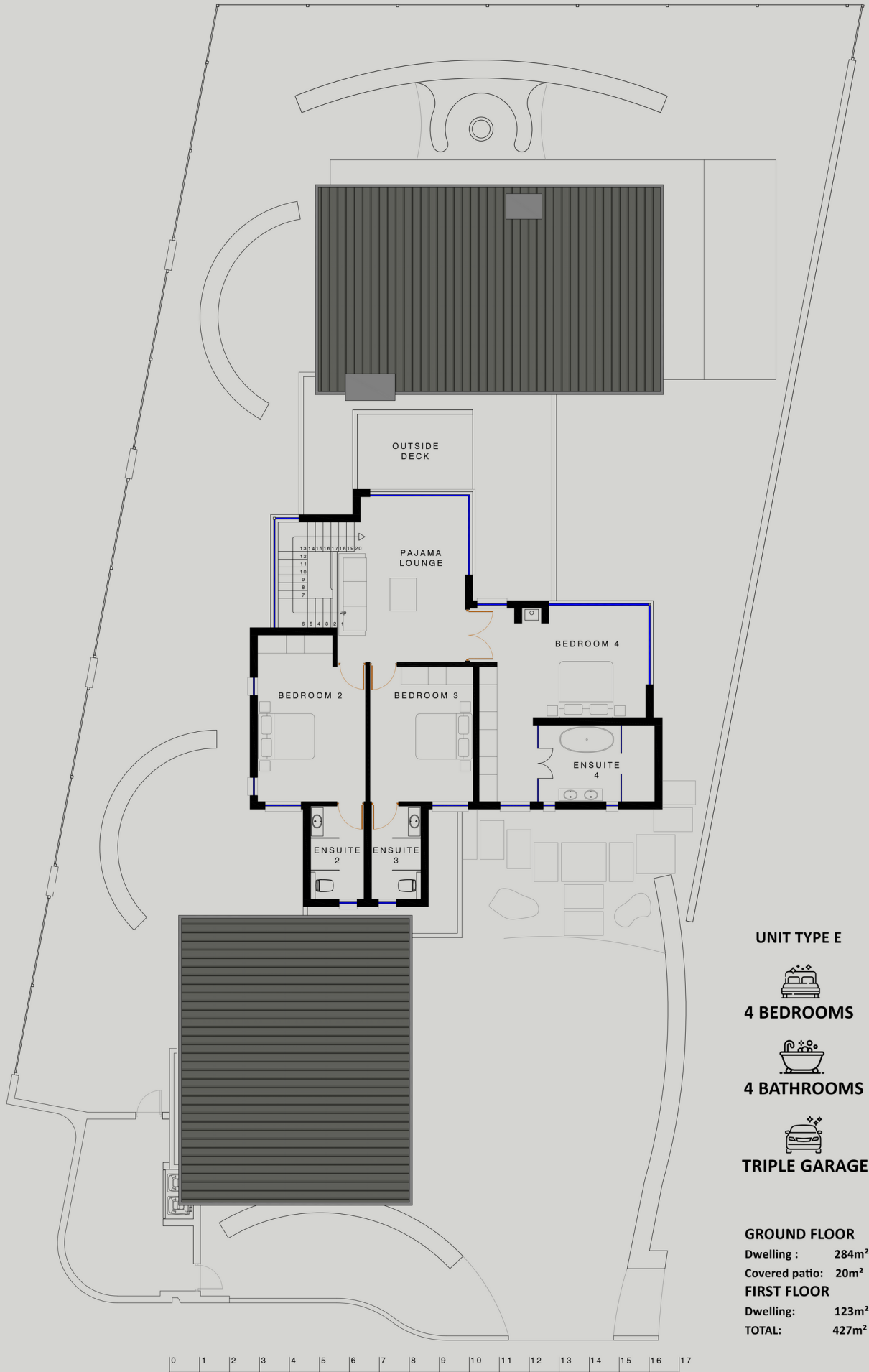
**TOTAL: 427m<sup>2</sup>**

**GROUND FLOOR**  
**ERF SIZE - 930m<sup>2</sup>**

*Vygeboom Estate*



# TYPE E - FIRST FLOOR



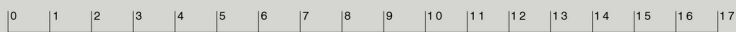
**UNIT TYPE E**

  
**4 BEDROOMS**

  
**4 BATHROOMS**

  
**TRIPLE GARAGE**

**GROUND FLOOR**  
 Dwelling : 284m<sup>2</sup>  
 Covered patio: 20m<sup>2</sup>  
**FIRST FLOOR**  
 Dwelling: 123m<sup>2</sup>  
**TOTAL: 427m<sup>2</sup>**



**FIRST FLOOR**  
**ERF SIZE - 930m<sup>2</sup>**

**DIRECTIONS****FROM CAPE TOWN**

Take the N1 towards Paarl, and take the Exit 23 onto Willie Van Schoor Avenue towards R302 Durban Road. Continue straight for 4.4km on Willie Van Schoor Avenue/ R302 Durban Road. Turn Right onto Vygeboom Street. Estate will be on your left hand side.

**FROM STELLENBOSCH**

Take Bird Street to Koelenhof Road/ R304, Follow R304 and take the N1 towards Cape Town. Follow N1 and take the exit 28 for M100/Brackenfell Boulevard towards Brackenfell  
Take the de Bron Rd/M73 and turn right onto Fairtrees Road, then turn left onto Vygeboom Street.

**INFO@VYGEBOOM.COM****083 232 4547 - RYNO**

**Disclaimer:** The images, perspectives and finishes shown are merely indicative impressions of the proposed development and are therefore subject to change at the developers discretion, The developer will not be held for any changes.

